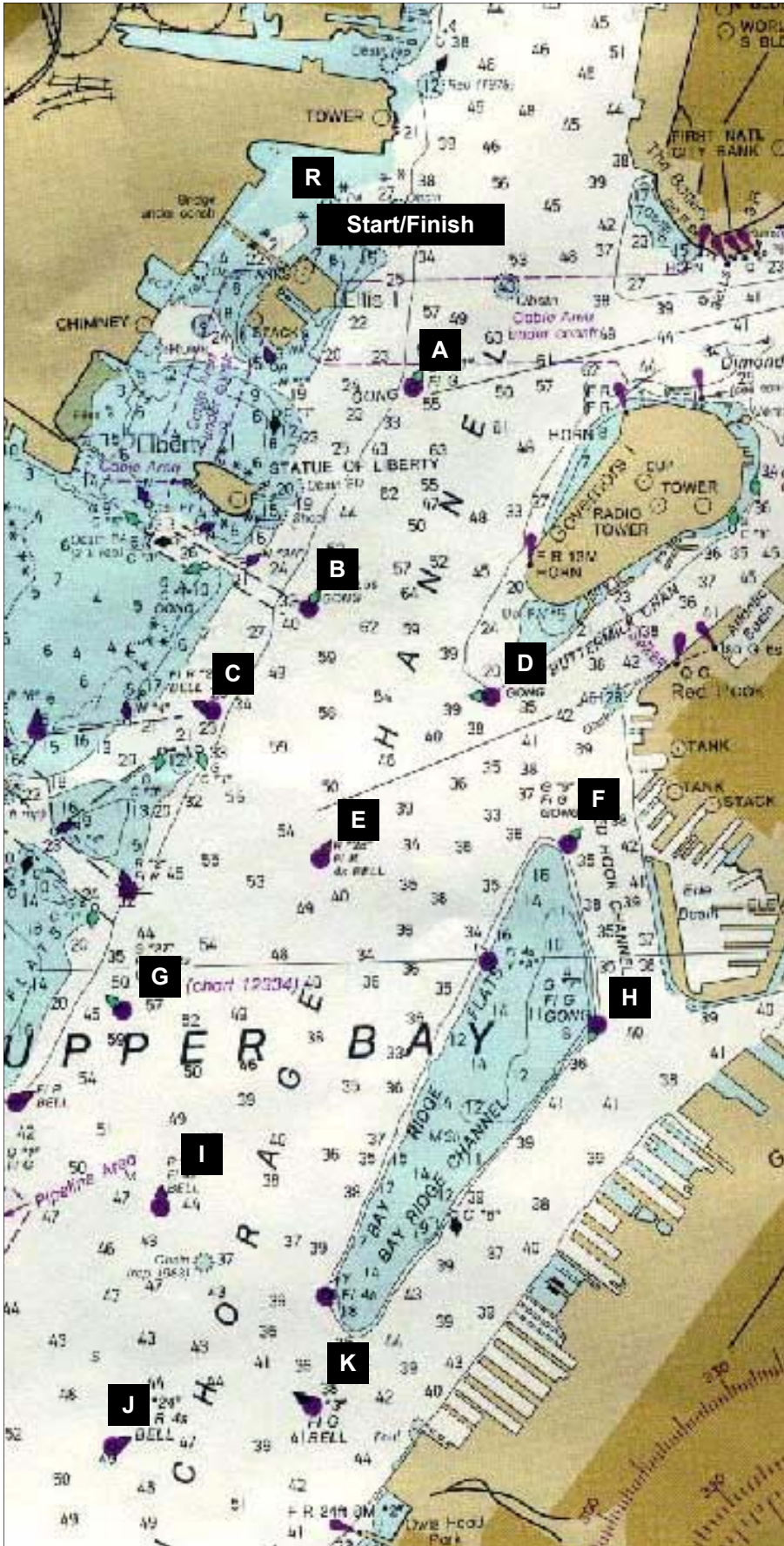




## 2008 Course Sheet

As of March 25, 2008



### Key to Marks:

- A = G "31" FI G 4s Gong
- B = G "29" FI G 2.5s Gong
- C = R N "2" Bell
- D = G "1" FI G Gong
- E = R "28" FI R 4s Bell
- F = G "11" FI G 2.5s Gong
- G = G "27" FI G 2.5s Gong
- H = G "9" FI G 4s Gong
- I = R "26" FI R 2.5s Bell
- J = R "24" Q R Bell
- K = G "5" FI G 2.5s Bell
- R = Cove Mark (orange inflatable north-west of Honorable William Wall in cove)
- X = Starting & finishing pin
- Z = Committee Choice (orange inflatable set by RC)

### Courses:

- 1 - Start - Ap - Finish
- 2 - Start - As - Finish
- 3 - Start - Bp - Finish
- 4 - Start - Bs - Finish
- 5 - Start - Cs - Finish
- 6 - Start - Dp - Finish
- 7 - Start - Ds - As - Finish
- 8 - Start - As - Xs - As - Finish
- 9 - Start - Ep - Finish
- 10 - Start - Ds - Bs - Finish
- 11 - Start - Ds - Cs - Finish
- 12 - Start - Bp - Dp - Finish
- 13 - Start - Cp - Dp - Finish
- 14 - Start - Ep - Dp - Finish
- 15 - Start - Ds - Ap - Bs - Finish
- 16 - Start - Ds - Bs - Ds - Bs - Finish
- 17 - Start - Ds - Cs - Ds - Cs - Finish
- 18 - Start - Es - Bs - Dp - As - Finish
- 19 - Start - Ds - As - Ds - As - Finish
- 20 - Start - Hs - As - Finish
- 21 - Start - Hs - Bs - Finish
- 22 - Start - Ds - Gs - Finish
- 23 - Start - Hs - Cs - Finish
- 24 - Start - Es - Cs - Bs - Ep - Finish
- 25 - Start - Ip - Finish
- 26 - Start - Kp - Finish
- 27 - Start - Jp - Finish
- 28 - Start - Zp - Finish
- 29 - Start - Zp - Xs - Zp - Finish
- 30 - Start - Zp - Xs - Zp - Xs - Zp - Finish
- 31 - Start - Zp - Rp - Zp - Finish
- 32 - Start - Zp - Rp - Zp - Rp - Zp - Finish
- 33 - Start - Ap - Rp - Finish
- 34 - Start - Ap - Rp - Ap - Rp - Finish
- 35 - Start - Dp - Rp - Ap - Rp - Finish