



Dennis Conner's International Yacht Club Challenge 20-22 August 2010

Organized by the New York Harbor Sailing Foundation, Inc.
Held at Manhattan Sailing Club, New York, NY

SAILING INSTRUCTIONS

1 RULES

The regatta will be governed by the rules as defined in *The Racing Rules of Sailing* (RRS), including the US SAILING prescriptions, except the prescriptions to rules 60, 63.2, and 63.4 shall not apply. This changes rule 63.7.

Please refer to the Racing Rules of Sailing regarding Protests, Redress, Hearings, Misconduct, and Appeals. The right to appeal is not denied.

2 NOTICES TO COMPETITORS

Notices to competitors will be posted on the official notice board located on the floating classroom.

3 CHANGES TO SAILING INSTRUCTIONS

Any change to the sailing instructions will be posted before 0930 on the day it will take effect, except that any change to the schedule of races will be posted by 2000 on the day before it will take effect.

4 SIGNALS

4.1 When Pennant "AP" is displayed ashore, "one minute" is replaced with "not less than 45 minutes" in Race Signal "AP".

4.2 Code Flag "Y" flown from the committee boat before the warning signal means "150% genoas may not be used".

4.3 Code Flag "Z" flown from the committee boat before the warning signal means "Spinnakers may not be used".

5 BOATS

5.1 Manhattan Sailing Club will provide race-ready J/24s plus sails for all teams. Teams shall use the J/24s as provided by the club and shall not bring any extra or special equipment with them while racing. Teams shall not adjust the shrouds, backstays or lifelines. Teams shall sail with all equipment on the boat and shall not remove any extra equipment or sails from the boat. Teams shall not apply any tape or make any marks or writing on the boat, spars or poles. Teams are not permitted to scrub the bottoms or rudders of the boats. The engine must remain on the engine bracket and is considered a part of the boat.

5.2 Competitors shall report any damage or loss of equipment, however slight, to the Manhattan Sailing Club Boat Manager immediately after securing the boat ashore. The penalty for breaking this instruction may be disqualification from the race most recently sailed.

6 FORMAT OF RACING

The regatta will consist of a single series of 8 races sailed over three days. Teams will rotate boats after each race. Boat assignments will be published after the initial boat draw on 19 Aug. See Appendix 1 for the boat rotation schedule and chartlet indicating area for boat exchange.

7 SCHEDULE OF RACES

7.1 The Schedule of races is as follows:

Thursday, August 19, 2009
1000 - Practice Sailing
1500 - Practice Race
1900 – First Boat Draw with Dennis Connor on the William Wall

Friday, August 20, 2009
0945 – Skippers Meeting, on the floating classroom
1100 - Race 1
Race 2
Race 3

Saturday, August 21, 2009
1100 - Race 4
Race 5
Race 6

Sunday, August 22, 2009
1200 - Race 7
Race 8

7.2 The warning signal is 1100 for the first race each day (1200 on Sunday).

7.3 On each day of the regatta, no warning signal will be made after 1600.

7.4 Races that are abandoned may be rescheduled on another day of racing.

8 RACING AREA

8.1 Attachment 2 shows the location of racing area.

8.2 Races will be held in Upper Hudson Bay. The start and finish of all races will be from the harbor clubhouse, which is permanently anchored north of Ellis Island. The Upper Hudson Bay is a commercial and recreational area; there will be ferries, barges, tugboats and other commercial and recreational vessels transiting the area.

8.3 Tide Information:

Day	Date	Low Tide	High Tide	Low Tide
Friday	20 Aug	0611	1313	1904
Saturday	21 Aug	0703	1410	2041
Sunday	22 Aug	0803	1509	2205

9 THE COURSES

9.1 The diagrams in Attachment 3 show the courses. All mark rounds will be to port.

9.2 The courses will be windward - leeward around two inflatable marks set by the race committee. The start and finish will be from the Clubhouse, named the "Honorable William Wall." Mark 1 will be set in the Hudson River in an upward or downwind direction from the Clubhouse and further from the Clubhouse. Mark 2 will be set in the cove near or behind the Clubhouse and will be closer to the Clubhouse. Races always sail to Mark 1 first. The first leg may either be upwind or downwind, depending on wind direction. The Race Committee will announce the course number over VHF CH 69 after the warning signal.

9.3 If Courses are shorted, the course will be shorted by removing a leg of the course or by shortening the length of a leg. Course changes will be announced over VHF Ch 69. This changes RRS 32

10 MARKS

10.1 Marks 1 and 2 will be orange inflatable cylindrical buoys, 4 feet high.

10.2 The starting and finishing marks will be a yellow sphere.

10.3 If there is course change that requires a new mark, that new mark will be a yellow inflatable cylindrical buoy, 4 feet high.

11 THE START

11.1 Races will be started as follows:

- 10 minutes before start - Warning Signal - Yellow flag up – one sound signal
- 6 minutes before start - Yellow flag lowered
- 5 minutes before start - Preparatory Signal - Blue flag up – one sound signal

1 minute before start - Blue flag lowered
Start - Red flag up— one long sound signal

This changes RRS 26.

11.2 The starting line will be between a staff displaying an orange flag aboard the Honorable William Wall and the starting mark.

11.4 A boat starting later than 10 minutes after her starting signal will be scored Did Not Start. This changes RRS A4 and A5.

12 INDIVIDUAL RECALLS

The Race Committee will endeavor to hail each premature starter over VHF channel 69. Failure to make such an announcement or for a yacht to hear this announcement shall not be grounds for redress. This changes rule 62.1(a).

13 CHANGE OF THE NEXT LEG OF THE COURSE

To change the next leg of the course, the race committee will either move the original mark or place a new mark (or the finishing line) at the new position. Course changes will be announced over VHF Ch 69. This changes RRS 33

14 THE FINISH

The finishing line will be between a staff displaying an orange flag on the Hon. William Wall and the finishing mark.

15 PENALTY SYSTEM

15.1. One Penalty Turn

A boat that may have broken a rule of Part 2 while racing may take a penalty at the time of the incident as provided below. This changes rule 44.1.

If there was no contact, her penalty shall be a One-Turn Penalty by promptly making the required number of turns in the same direction, including one tack and one gybe. When a boat takes the penalty at or near the finishing line, she shall sail completely to the course side of the line before finishing.

15.2 No Touching Rule & Penalty Turn - Contact can result in damage to boats and should be avoided. If two boats touch, the offending boat shall do 2 penalty turns. The boat in the right must also do one penalty turn for allowing the contact to occur. A touch is defined as any contact between boats, including rigs, sails, crew, etc. Failure to honor this "No Touching Rule" will result in the boat being disqualified from the race.

16 TIME LIMITS

16.1 The time limit for each individual race will be 2 hours.

16.2 Boats failing to finish within 20 minutes after the first boat sails the course and finishes will be scored Did Not Finish. This changes rules 35, A4 and A5.

17 PROTESTS

Protests are not encouraged as this is a regatta to promote "international goodwill through friendly competition". We request each team use sportsmanship to communicate and decide situations among themselves without the need of a third party. However, if a team wishes to file a protest, protest flags are not required but all other procedures within the RRS will apply.

Intention to protest for a rule of Part 2 and the boat being protested shall be signified to the Race Committee on the VHF Channel 69 at the finish of a race, until acknowledged by the Race Committee. This modifies rule 61.1(a).

The protest time limit in rule 61.3 is 30 minutes after the Race Committee Signal Boat docks. Notices will be posted to inform competitors of protest hearings in which they are parties as soon as possible after the protest time limit. Hearings will be held as soon as possible, approximately in the order received. Location and times will be posted.

Boats may not protest other boats for breaches of: retirement from race notification, safety equipment, and disposal of trash. The penalty for breaking these rules is at the discretion of the Protest Committee and may be less than disqualification. This changes rule 60.1(a).

On the last day of the regatta, rules 66, 62.2, and the US SAILING prescription to rule 62.2 are changed such that a request for reopening a hearing or a request for redress based on an action or omission of the jury shall be delivered within the protest filing deadline if the requesting party was informed of the decision the previous day; no later than 30 minutes after the requesting party was informed of the decision on that day; or no later than 30 minutes after a signal to abandon racing is displayed ashore.

18 SCORING

18.1 The scoring system is as follows: The Low Point Scoring System. Any boat scoring DNF, DNS, BKDN, DSQ or other special finish will be given one more point than the number of finishers with no additional penalty points assigned.

18.2 If 5 or more races are completed, teams may drop their worst score. All scores, including DNF, DNS, BKDN & DSQ may be dropped.

19 SAFETY REGULATIONS

19.1 All boats shall request permission to depart and enter the North Cove on VHF Ch 69. The "Local Rep" aboard each boat can assist with this requirement.

19.2 A boat that retires from a race shall notify the race committee as soon as possible on VHF Ch 69.

19.3 Right of Way for Commercial Traffic - All commercial vessels shall have right of way over all racing sailboats. If a racing sailboat crosses the bow of a commercial vessel and that vessel alters course or speed as a result, the sailboat may be disqualified by the race committee. If any sailboat decides to take the stern of a commercial vessel, all sailboats in the same location or subsequently arriving on the scene must also take the stern of the commercial vessel unless sufficient proof can be provided by a sailboat that taking the stern would have caused increased risk. If a commercial vessel slows or comes to a stop when approaching sailboats, sailboats must still continue to take the stern so as to clear a path for the commercial vessel to move forward and clear. The race committee may disqualify a boat at its discretion without a hearing for any interference with commercial vessels. This changes the preamble of Part 2 of the RRS.

19.4 "Life Jackets Mandatory Rule" - The entire crew on all racing boats must wear, at all times, some type of personal flotation device, which goes around the torso and shoulders. "Fanny packs" or inflatable devices attached around the waist do not qualify. The PFDs shall be worn according to manufacturer's direction. PFDs worn around the waist shall not satisfy the purpose of this rule. If crewmembers do not bring their own PFD, they will use the PFD's provided on each boat. All flotation devices must be easily visible to the race committee and the inability of the race committee to see a PFD will mean it was not worn properly. This changes rule 1.2.

19.5 Security Zones – The USCG has established a 150-yard security zone around Ellis and Liberty Islands as shown in Attachment 4. Additionally there is a 100-yard security zone around all US Naval or Coast Guard vessels. These security zones are considered obstructions on the racecourse and no boat is allowed to sail inside the security zones. Boats found to be in the zone will be immediately hailed by a race committee boat on VHF Ch 69 to notify them to move out of the zone. The penalty will be a 720 degree turn.

19.7 Weather Protocols – There may be no racing if the wind gusts to speeds greater than 25 knots, there is lightning or thunderstorms. A race may be postponed or abandoned if any of these conditions exist. If a race is abandoned for weather, teams will be notified via VHF Ch 69 and may be directed to proceed to the North Cove.

20 CREW; REPLACEMENT OF CREW OR EQUIPMENT

20.1 This is an amateur competition designed to encourage foreign sailors to visit New York City. Unlimited crew substitution, addition or subtraction, regardless of weight, is allowed during the regatta as long as these crew rules are not violated.

Following are the crew rules:

- Yacht clubs must be represented by amateur crews who are not paid to participate in this event.
- At least 2 members of each crew must be members of the yacht club they represent for one year or more.
- The maximum number of sailors (including Local Representative) on a J/24 at any time is 6 and the minimum number is 4.

20.2 One Local Representative will sail on each boat. The “Local Rep” will provide local knowledge and a VHF radio to communicate with the Race Committee. Local Reps will stay with the boat while racing teams rotate. *Local Reps do not represent nor speak on behalf of the race committee; teams shall not rely on the local rep for any interpretation of the Racing Rules of Sailing, the Notice of Race or these sailing instructions.*

20.2 Substitution of damaged or lost equipment will not be allowed unless approved by the Manhattan Sail Club Boat Manager. Requests for substitution shall be made to the Manhattan Sail Club Boat Manager at the first reasonable opportunity.

21 RADIO COMMUNICATION

21.1 A boat shall neither make radio transmissions while racing nor receive radio communications not available to all boats. This restriction also applies to mobile telephones.

21.2 The Race Committee will use VHF CH 69 to announce the course after the warning signal and to identify any boats, which have started incorrectly.

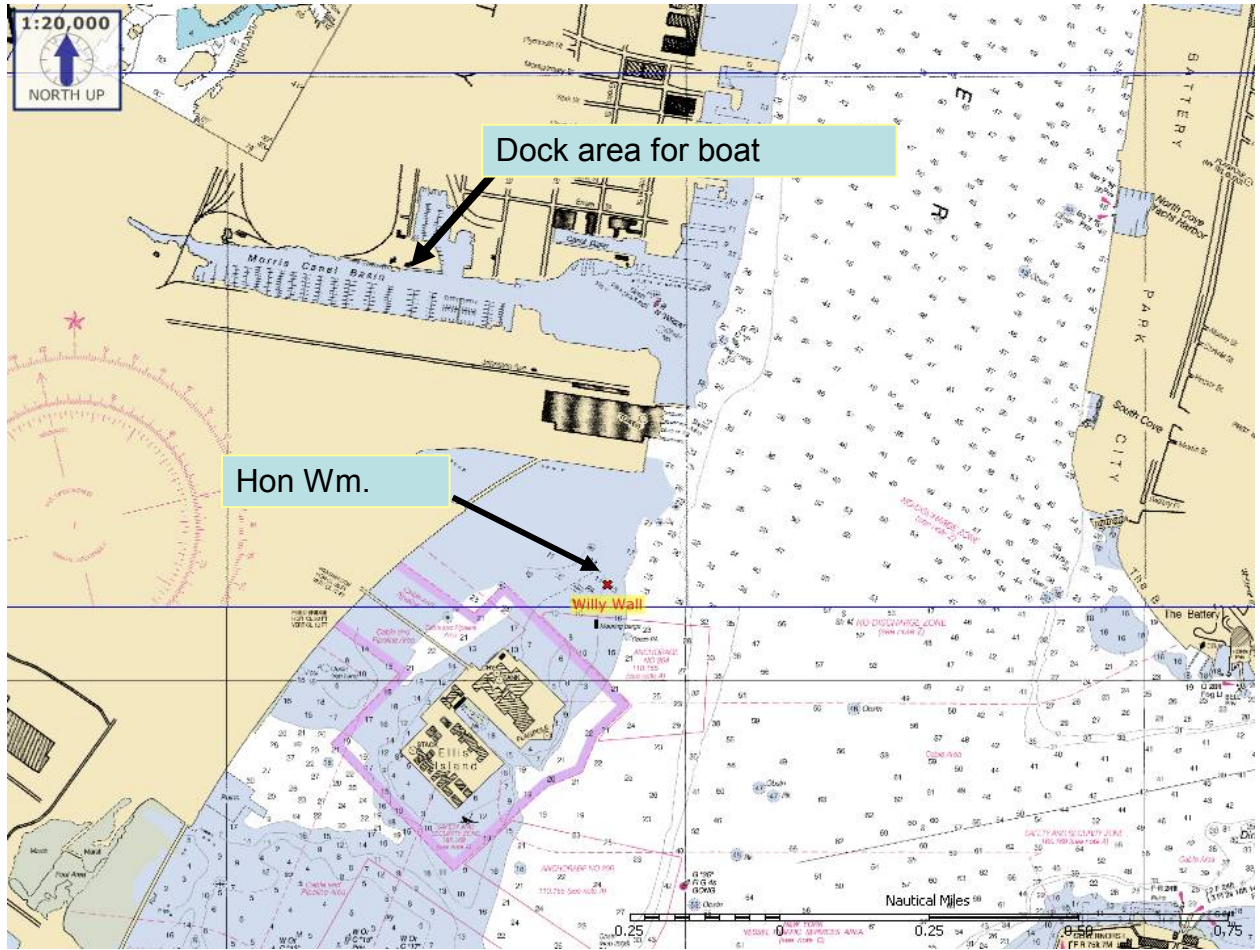
21.3 Assistance from Race Committee - The Race Committee may respond to any questions from sailors even after the race has started and any such answers from the race committee will not be considered outside assistance.

22 PRIZES

Prizes: Regatta prizes will be awarded to the top teams.

Special Awards: Each team should bring a symbolic (and humorous) gift or trophy to give to the team, which finishes directly behind them in the overall standings. These gifts or trophies will be awarded at the Prize Giving.

Attachment 1 – Team/Boat Rotation Area



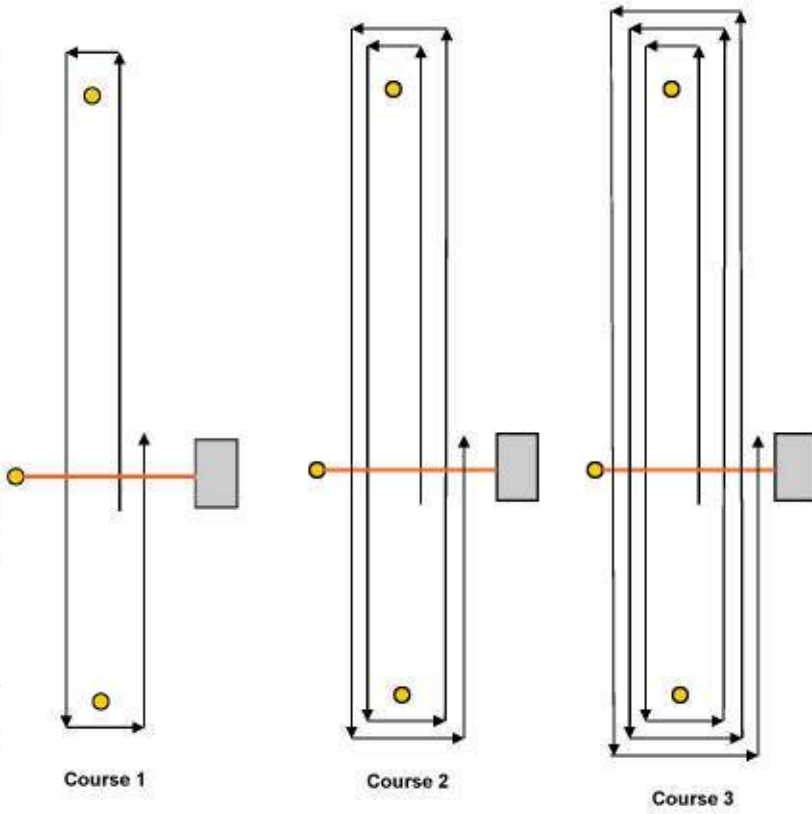
Attachment 3 - Courses

Mark 1
set in Hudson River
either upwind or
downwind and farther
away from clubhouse

↑
↓
Wind
first leg either up-
wind or downwind

During race, you only
need to pass through
starting/finishing line if
you intend to start or
finish. Otherwise, line
can be disregarded.

Mark 2
set in cove behind
clubhouse and
closer to the club-
house



Attachment 4 - Security Zones

